



How to Sign into Google Classroom from Home

Logging on to Google Classroom from Home:

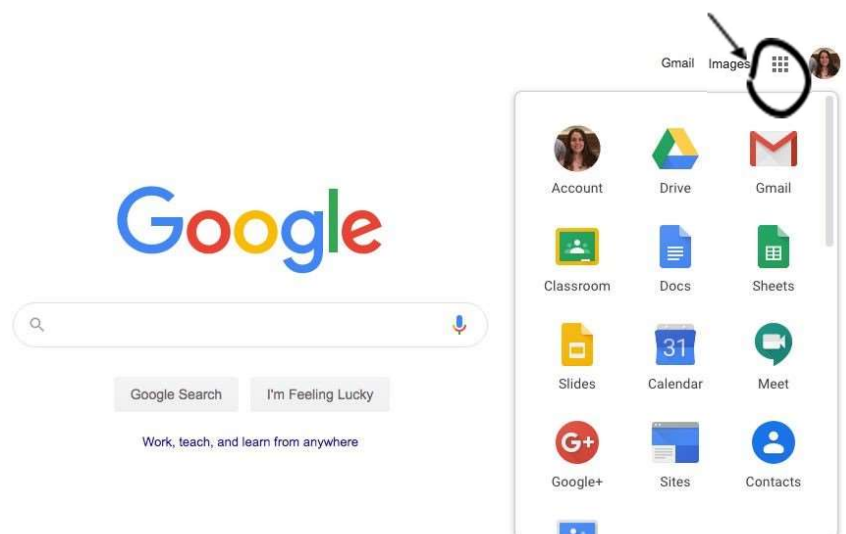
Step 1: Sign in to your Google account by typing in **www.google.com** into your web browser and clicking the blue sign in button in the upper right corner of the screen.

*If you are having trouble logging in from home, make sure all other Google accounts are signed out before you login in. If they aren't, you won't be able to log in.

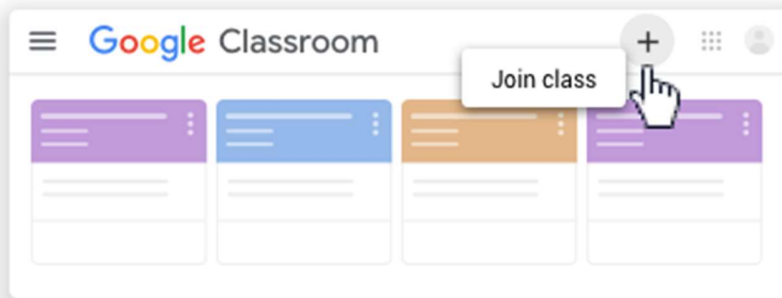


Step 2:

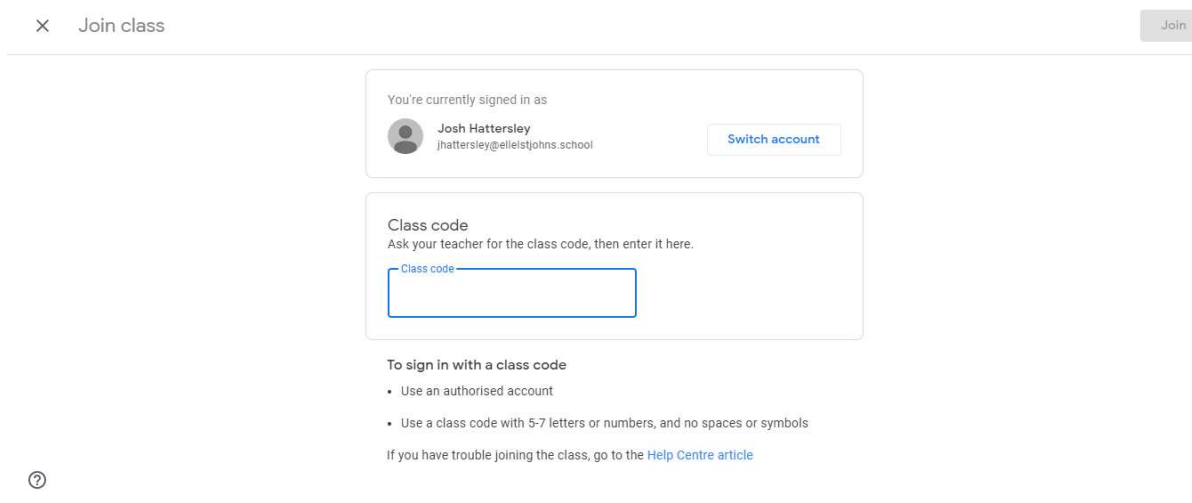
Once you are signed in to your Google account, click on the Nine dots and a window will appear. Click on Google Classroom or you can access your email here and other devices like Google docs.



Step 3:



Click on Join Class



A screenshot of the 'Join class' dialog box in Google Classroom. The dialog has a title bar with 'X Join class' on the left and a 'Join' button on the right. The main content area is divided into sections:

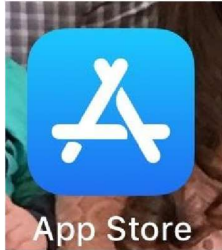
- You're currently signed in as:** Josh Hattersley (jhattersley@elleistjohns.school) with a 'Switch account' button.
- Class code:** Ask your teacher for the class code, then enter it here. Below this is a text input field with a blue border and the placeholder text 'Class code'.
- To sign in with a class code:**
 - Use an authorised account
 - Use a class code with 5-7 letters or numbers, and no spaces or symbols
- At the bottom, there is a link: 'If you have trouble joining the class, go to the [Help Centre article](#)'.

A help icon (?) is located in the bottom left corner of the dialog.

Here you can enter the class code that your teacher has handed out

PHONE/TABLET/IPAD

***If signing in from a phone, tablet, or iPad, downloading the app can be much easier for you to access Google Classroom.



Go to App Store

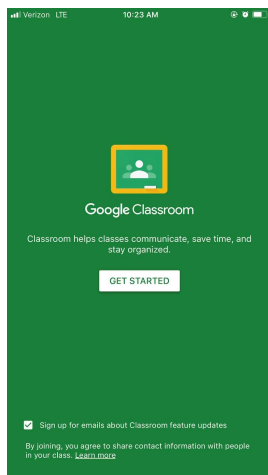
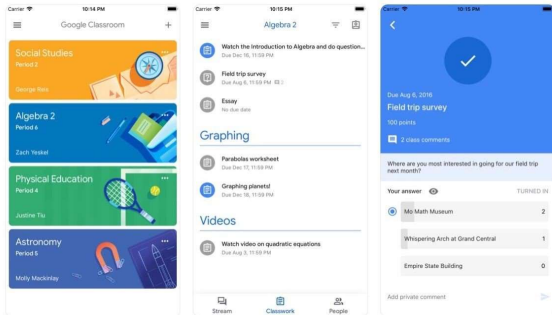


Google Classroom
Instant. Paperless. Easy.
★★★★★ 144K

OPEN

Download App

(Ask parents for help and password.)



Sign into Google Classroom using school email and password